

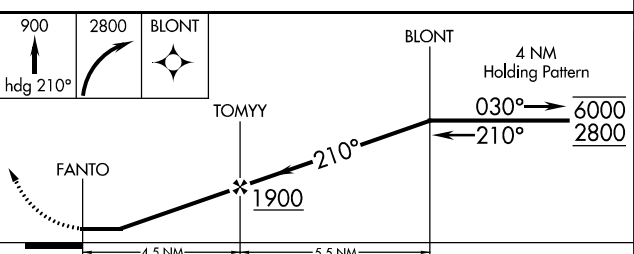
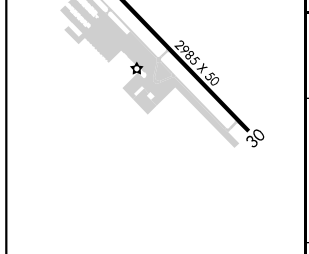
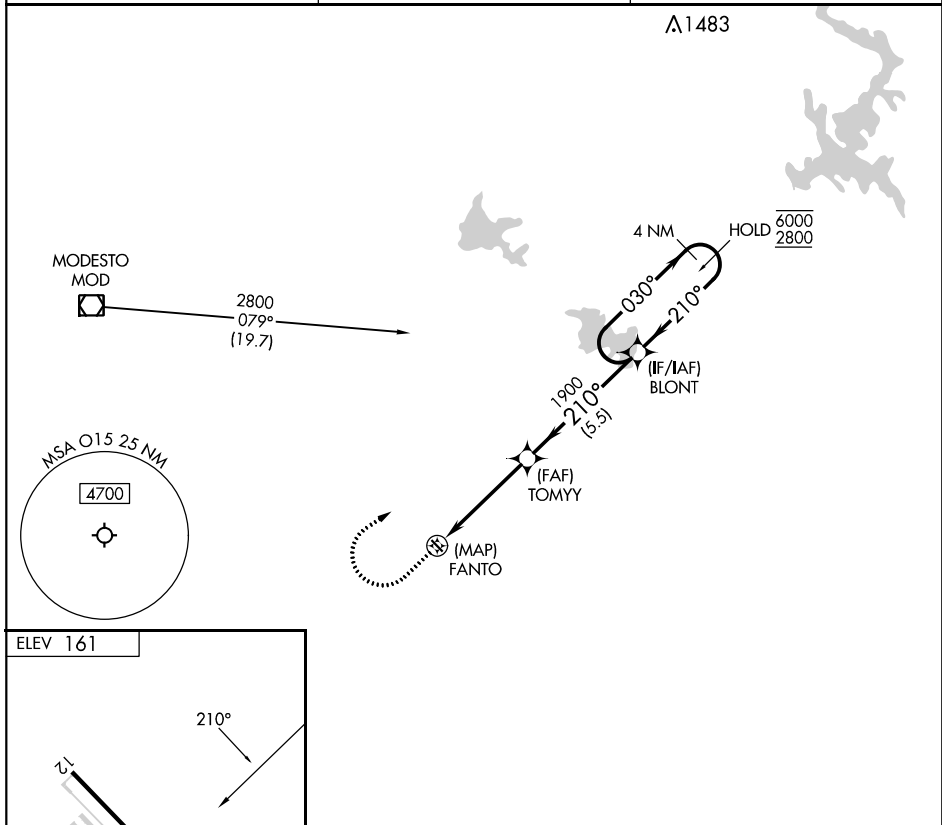
APP CRS 210°	Rwy Idg TDZE Apt Elev	N/A N/A 161
------------------------	-----------------------------	----------------------------------------

RNAV (GPS)-A
TURLOCK MUNI (015)

RNP APCH - GPS.
 Procedure NA at night. Use MER altimeter setting; when not received, use MCE altimeter setting and increase all MDAs 20 feet.

MISSED APPROACH: Climb to 900 on heading 210° then climbing right turn to 2800 direct BLONT and hold.

MER AWOS-3 124.475	NORCAL APP CON 120.95 269.45	UNICOM 122.8 (CTAF)
------------------------------	----------------------------------------	-------------------------------



CATEGORY	A	B	C	D
CIRCLING	740-1 579 (600-1)	760-1 599 (600-1)	NA	

LIRL Rwy 12-30
 TURLOCK, CALIFORNIA
 Orig 31OCT24

37°29'N-120°42'W

TURLOCK MUNI (015)
RNAV (GPS)-A

SW-2, 31 OCT 2024 to 28 NOV 2024

SW-2, 31 OCT 2024 to 28 NOV 2024